

## Menage lighting

Installation : Area Lightng

Project number : SOL2010

Customer : Equestrian Design

Processed by : Adrian Hoe

Date : 25.11.2019

Project description:  
Area lighting 6m mounting height

Lighting level achieved

4.29 lux average  
1.83 lux minimum  
0.43 Overall Uniformity

The following values are based on precise calculations performed on calibrated lamps and luminaires, and their configurations, whereby gradual, unavoidable deviations can occur in practice. All guarantee claims are excluded for the specified data.

This exclusion of liability applies irrespective of the legal grounds for both damages and consequential damages suffered by users and third parties.

Object : Menage lighting  
Installation : Area Lightng  
Project number : SOL2010  
Date : 25.11.2019

# 1 Luminaire data

## 1.1 Solar Technology, ARENA Light (!ARENA Light)

### 1.1.1 Data sheet

Manufacturer: Solar Technology

**!ARENA Light**      **ARENA Light**

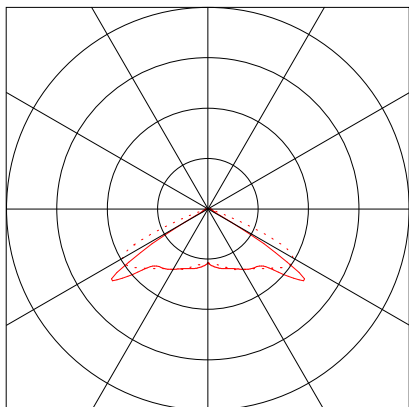
#### Luminaire data

Luminaire efficiency : 146.2%  
Luminaire efficacy :  
Classification : A30 ↓100.0% ↑0.0%  
CIE Flux Codes : 31 75 99 100 147  
UGR 4H 8H : 63.0 / 65.6  
Luminous flux : 1462 lm

#### Equipped with

Quantity : 1  
Designation :  
Colour :  
Luminous flux : 1000 lm

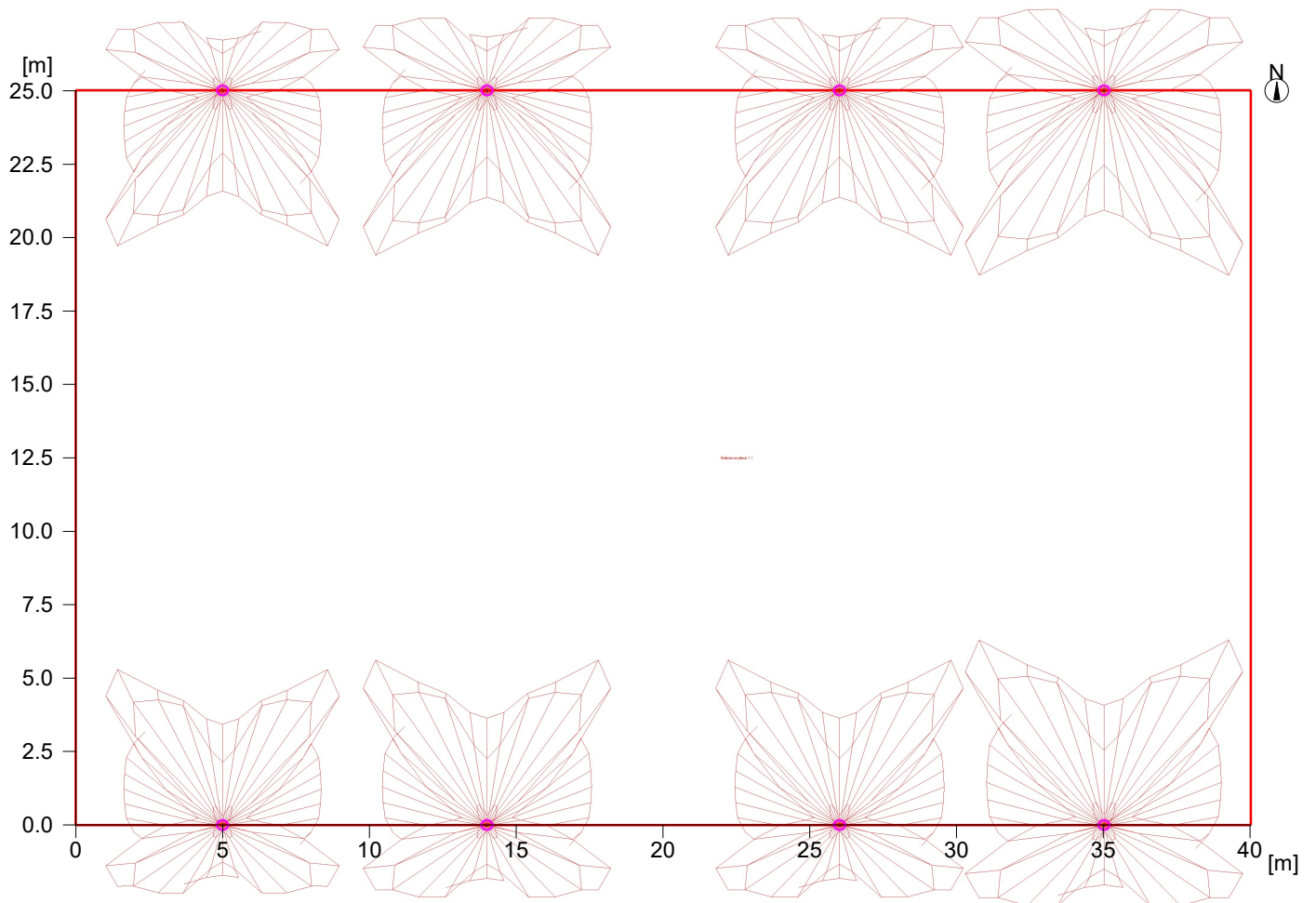
Dimensions : Ø400 mm x 1 mm



## 2 Exterior 1

### 2.1 Description, Exterior 1

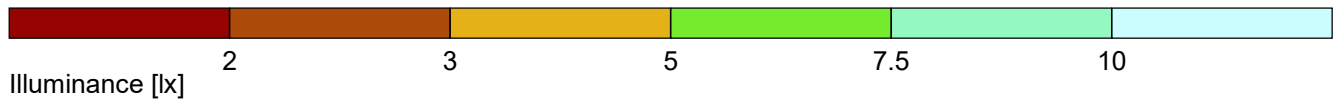
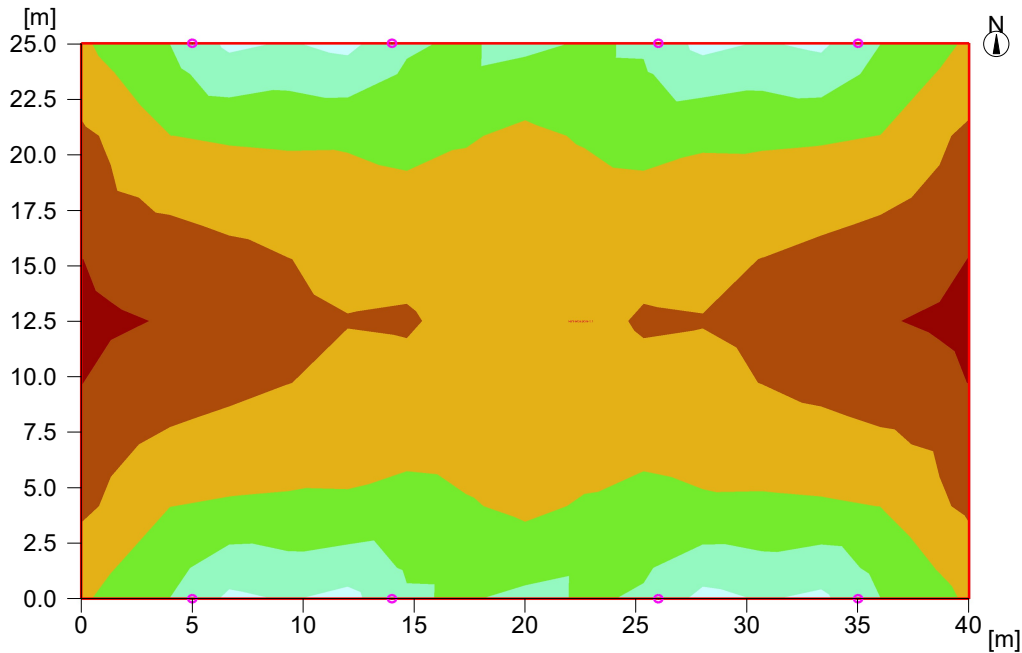
#### 2.1.1 Floor plan



## 2 Exterior 1

### 2.2 Summary, Exterior 1

#### 2.2.1 Result overview, Evaluation area 1



#### General


Calculation algorithm used	Average indirect fraction
Height (phot. centre)	6.00 m
Maintenance factor	0.85
Total luminous flux of all lamps	8000.00 lm

#### Evaluation area 1

#### Reference plane 1.1

	Horizontal
Em	4.29 lx
Emin	1.83 lx
Emin/Em (Uo)	0.43
Emin/Emax (Ud)	0.22
Position	0.00 m

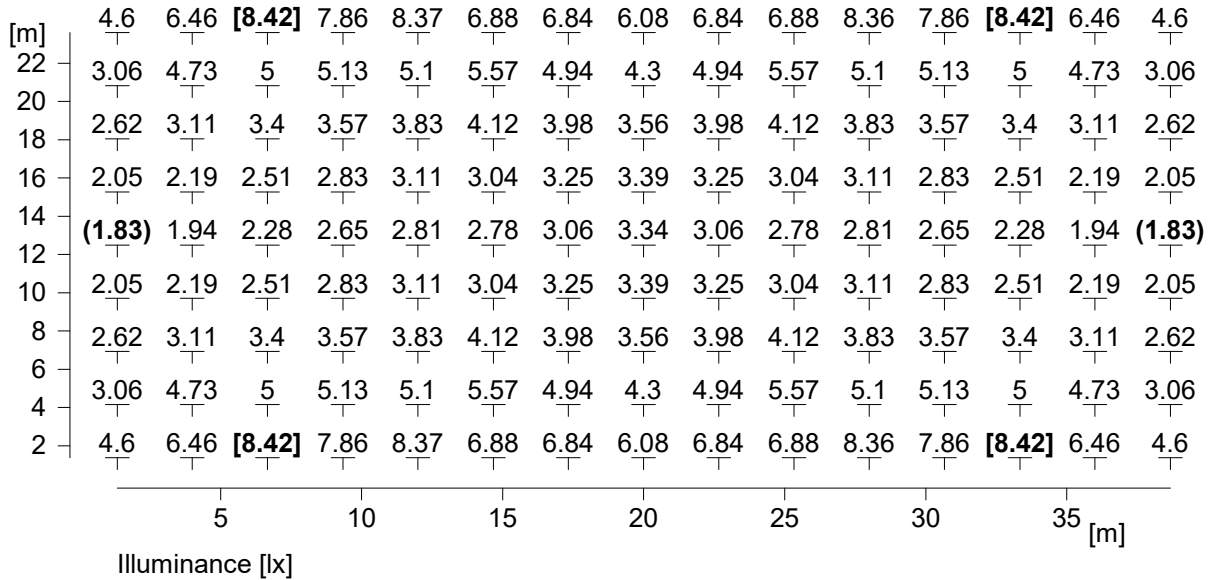
#### Type No. Make

1	8	<b>Solar Technology</b>
		Order No. : !ARENA Light
		Luminaire name : ARENA Light
		Equipment : 1 x / 1000 lm

## 2 Exterior 1

### 2.3 Calculation results, Exterior 1

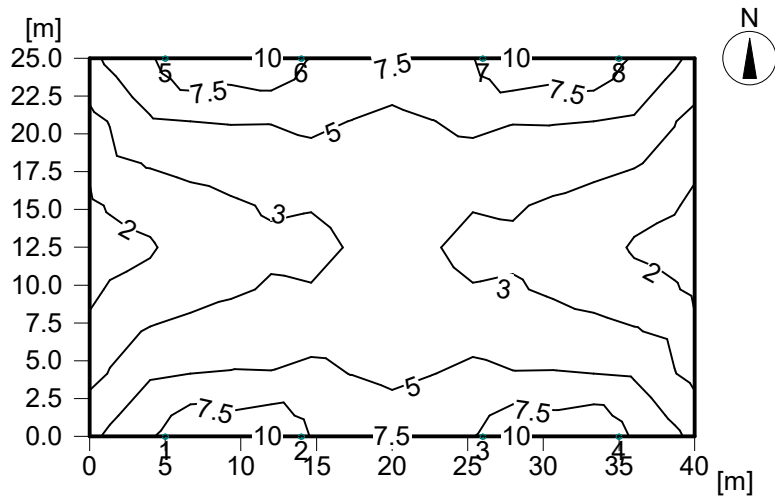
#### 2.3.1 Table, Reference plane 1.1 (E)



Height reference plane : 0.00 m  
 Average illuminance Em : 4.29 lx  
 Minimum illuminance Emin : 1.83 lx  
 Maximum illuminance Emax : 8.42 lx  
 Uniformity Uo Emin/Em : 1 : 2.34 (0.43)  
 Diversity Ud Emin/Emax : 1 : 4.59 (0.22)

### 2.3 Calculation results, Exterior 1

#### 2.3.2 Isolines representation, Reference plane 1.1 (E)



Illuminance [lx]

Height reference plane	:	0.00 m
Average illuminance	Em	: 4.29 lx
Minimum illuminance	Emin	: 1.83 lx
Maximum illuminance	Emax	: 8.42 lx
Uniformity Uo	Emin/Em	: 1 : 2.34 (0.43)
Diversity Ud	Emin/Emax	: 1 : 4.59 (0.22)

## 2.3 Calculation results, Exterior 1

### 2.3.3 3D pseudo colours, View from the right (E)

---

